

# BURNMOOR DRIVE, EAGLESCLIFFE, STOCKTON-ON-TEES, TS16 0HZ



- ▲ A Sensibly Priced Three Bedroom Semi-Detached House Nicely Positioned Within a Small Cul-De-Sac in This Popular Eaglescliffe Setting
- ▲ Close to Highly Regarded Junior & Secondary Schooling & Shopping Facilities
- ▲ Gas Central Heating System Via a Combination Boiler & Double Glazed Windows

- ▲ Nicely Presented Gardens, Block Paved Driveway & Single Garage
- ▲ Lounge with Separate Dining Room
- ▲ Kitchen with A Good Range of Fitted Units, Built-In Oven & Hob & Integrated Freezer
- ▲ Three Bedrooms & Bathroom on The First Floor
- ▲ Early Viewing Comes Highly Recommended

**£165,000**

[www.michaelpoole.co.uk](http://www.michaelpoole.co.uk)

**Michael Poole**  
sales | lettings | auctions



A sensibly priced three bedroom semi-detached house nicely positioned within a small cul-de-sac in this popular Eaglescliffe setting, close to highly regarded junior and secondary schooling and shopping facilities. Early viewing comes highly recommended.

**BEDROOM TWO - 2.87m x 2.82m (9'5" x 9'3")**

**BEDROOM THREE - 2.9m x 2.08m (9'6" x 6'10")**

**BATHROOM - 1.88m x 1.83m (6'2" x 6')**

**GROUND FLOOR**

**ENTRANCE HALL**

**LOUNGE - 4.2m x 3.8m (13'9" x 12'6")**

**DINING ROOM - 3.2m x 2.5m (10'6" x 8'2")**

**KITCHEN - 3.18m x 2.24m (10'5" x 7'4")**

**FIRST FLOOR**

**LANDING**

**BEDROOM ONE - 4.01m x 2.62m (13'2" x 8'7")**  
Fitted wardrobes.

**EXTERNALLY**

**GARDENS & GARAGE**

Lawned front garden with shrub borders. A block paved driveway provides off street parking. There is a single garage with up and over door. The rear garden has an astro turf lawn together with gravelled areas.

**AGENTS REF:** - DC/LS/YAR240067/22022024

**Council Tax Band:** B      **Tenure:** Freehold

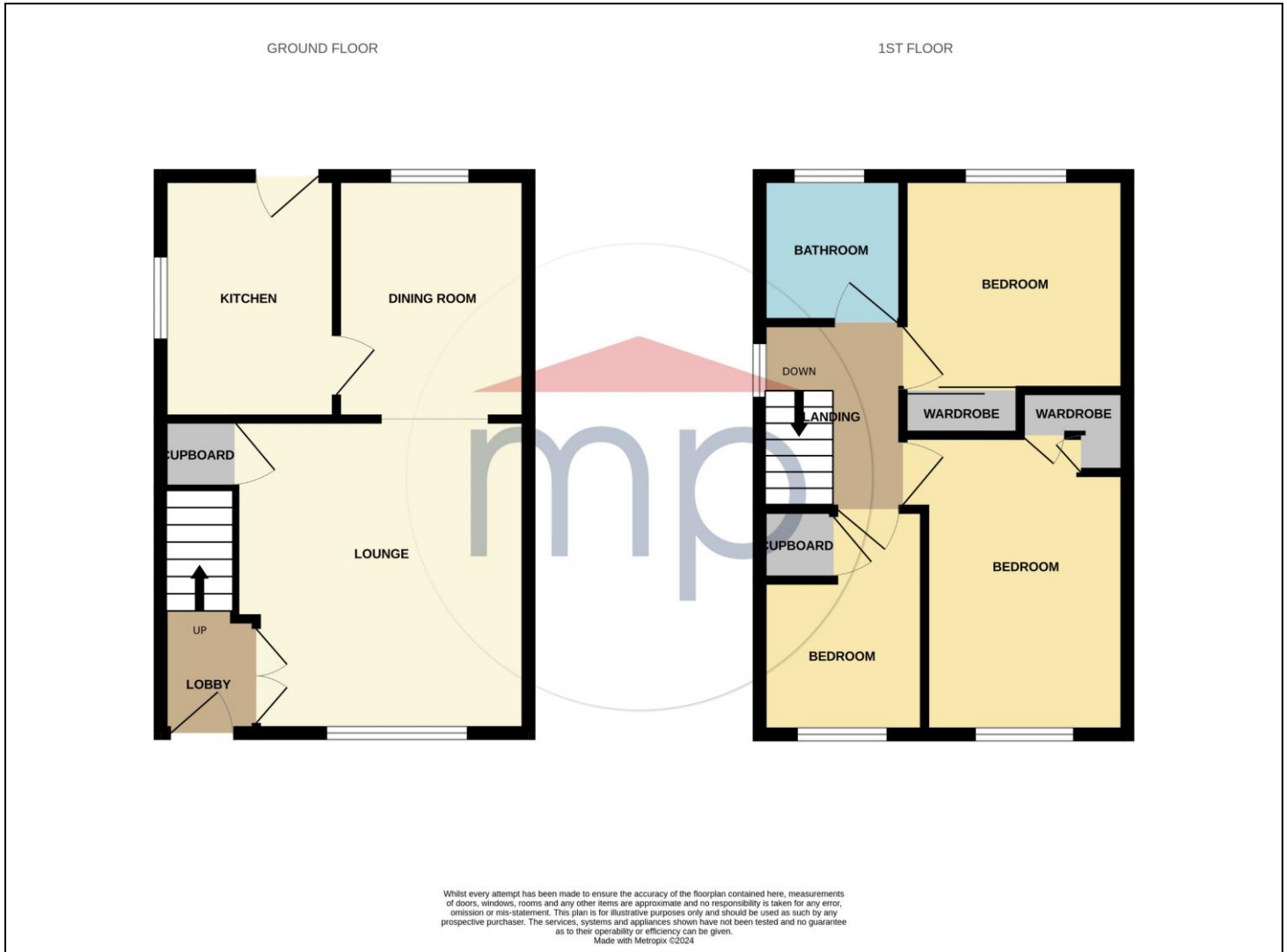
**TO VIEW:** Contact our Yarm office on

Tel: **01642 788878**

**TO VIEW:** Tel: **01642 788878**  
59 High Street, Yarm, TS15 9BH

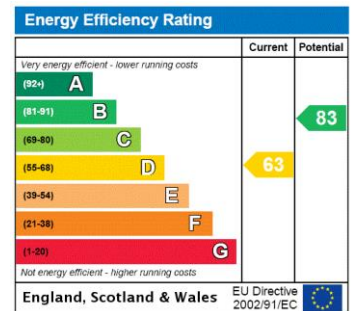
[www.michaelpoole.co.uk](http://www.michaelpoole.co.uk)





Whilst every attempt has been made to ensure the accuracy of the floorplan contained here, measurements of doors, windows, rooms and any other items are approximate and no responsibility is taken for any error, omission or mis-statement. This plan is for illustrative purposes only and should be used as such by any prospective purchaser. The services, systems and appliances shown have not been tested and no guarantee as to their operability or efficiency can be given. Made with Metropix 5/2024.

The information provided about this property does not constitute or form part of an offer or contract, nor may it be regarded as representations. All interested parties must verify accuracy and your solicitor must verify tenure and lease information, fixtures and fittings and, where the property has been recently constructed, extended or converted, that planning/building regulation consents are in place. All dimensions are approximate and quoted for guidance only, as are floor plans which are not to scale, and their accuracy cannot be confirmed. Reference to appliances and/or services does not imply that they are necessarily in working order or fit for the purpose. We offer our clients an optional conveyancing service, through panel conveyancing firms, via MWU and we receive on average a referral fee of one hundred and thirty pounds, only on completion of the sale. If you do use this service, the referral fee is included within the amount that you will be quoted by our suppliers. All quotes will also provide details of referral fees payable.



**TO VIEW:** Contact our Yarm Office on Tel: **01642 788878**  
59 High Street, Yarm, TS15 9BH